



# Program in Medical Education for the Latino Community (PRIME-LC)

University of California, Irvine – School of Medicine

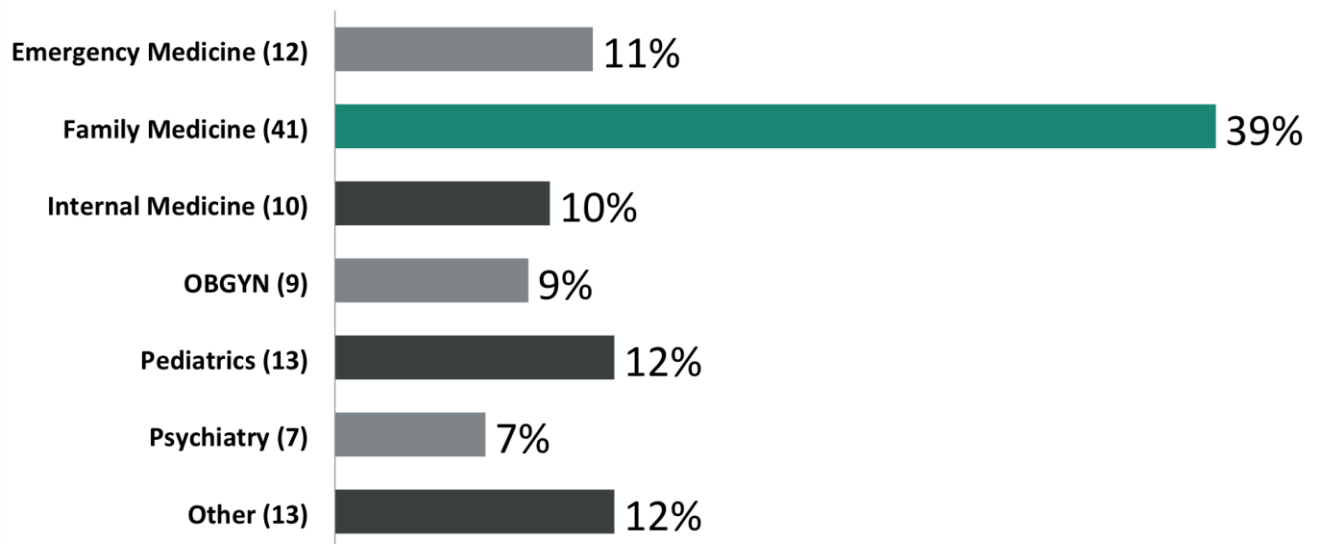
Alumni Fact Sheet  
2018-19

## Mission Statement

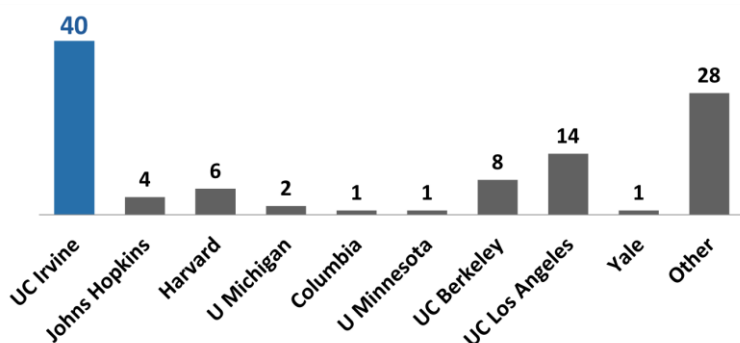
Established in 2003, the **Program in Medical Education for the Latino Community (PRIME-LC)** is a five-year, **dual-degree MD/Master's program** at the UC Irvine School of Medicine. The program was developed to provide specialized training for future physicians who are committed to **careers in public service**. PRIME-LC graduates are expected to work on closing the healthcare gap of the nation's largest ethnic group by improving healthcare delivery, research and policy for **California's underserved Latino communities**.

## PRIME-LC Alumni 2009-2018

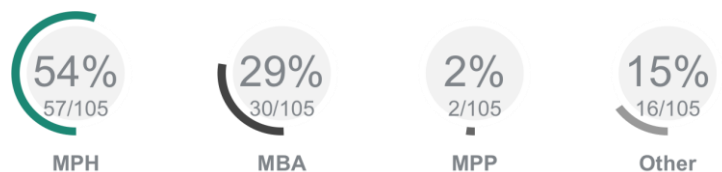
**88%** (88/105) **Residency** in Community Serving Fields



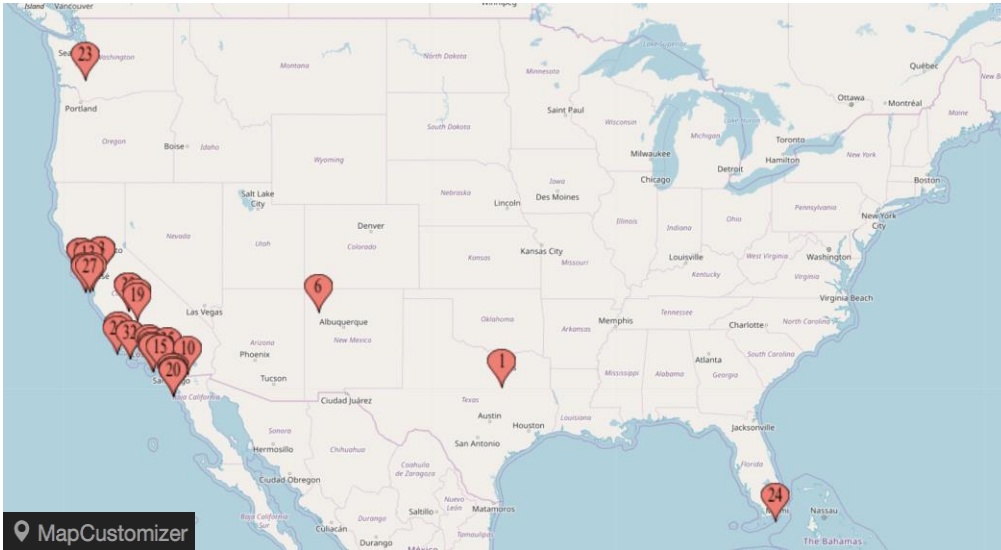
**73%** (77/105) Attended **UCI** or **Top 15** Ranked Master's Institution



**85%** (89/105) Received a **Master's Degree** in **Public Health (MPH)**, **Business Administration (MBA)**, or **Public Policy (MPP)**



# PRIME-LC Attending Physician Alumni

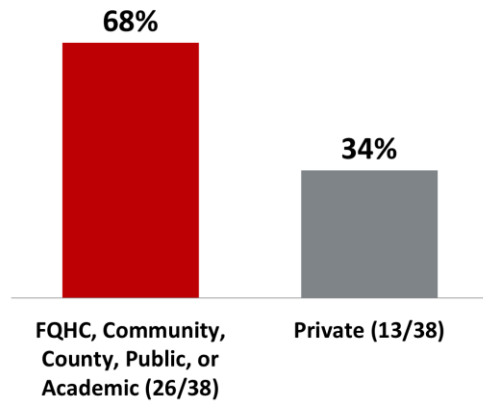


38 graduates of PRIME-LC to date have completed their residency and fellowship training and are working as attending physicians, primarily serving Latino patients in medically underserved communities around California. Our graduates strive for health equity in their work as clinicians, mentors and leaders in their communities.

## Attending Physician Practice Location

- **89% California** (34/38)
- 3% Florida (1/38)
- 3% Texas (1/38)
- 3% Washington (1/38)
- 3% New Mexico (1/38)

## PRIME-LC Alumni Attending Physicians Practice Location Type<sup>1</sup>

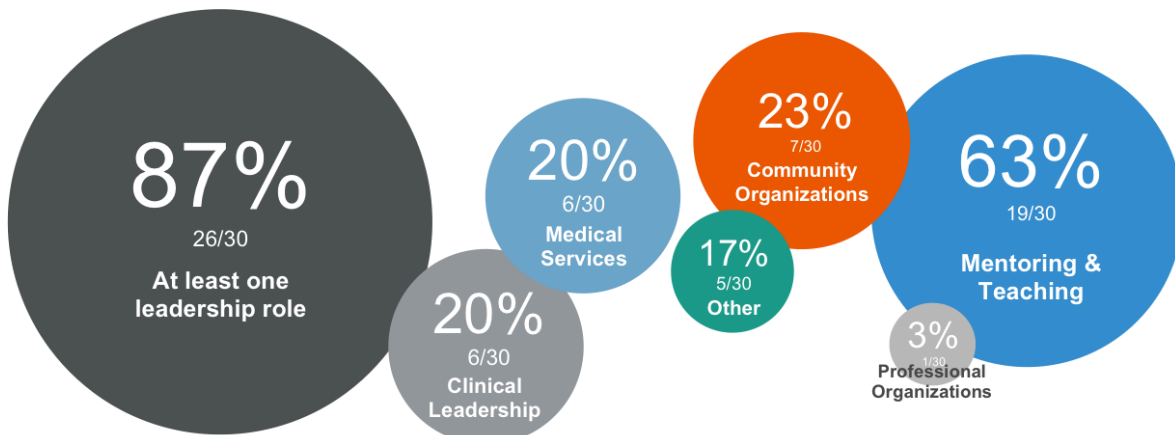


## PRIME-LC Alumni Attending Physician Patient Populations Served<sup>2</sup>

Physicians for whom more than 50% of patients seen are:

<b>Latino</b>	63% (19/30)
<b>Low Income</b>	70% (21/30)

## Leadership Roles for PRIME-LC Alumni Attending Physicians<sup>2</sup>



<sup>1</sup>Responses do not add to 100% since some respondents work at multiple locations  
<sup>2</sup>PRIME-LC Graduate Survey (2016-18), 30/38 Attending Physicians replied to survey

## Contact Us



**PRIME-LC**  
 Phone: 949-824-7136  
 Email: [primelc@uci.edu](mailto:primelc@uci.edu)  
 Website:  
<https://www.meded.uci.edu/curricular-affairs/prime-lc.asp>

